

Kauni knitting instructions no.8

Design no. 1 Cardigan with stripes and dots

Materials: Kauni efektyarn 8/2 and Kauni solid colour 100% wool

Size: XS(S)M(L)XL

Burst measurements: 51(53)55(57)59 cm

Length: 64(66)68(70)72 cm

Yarn needed: 250g of solid colour and 250g of effect yarn

Colour recommendations: Effect yarn ET + solid colour HH3, Effect yarn EX+solid colour LL6, Effect yarn EV+ solid colour PP.

Needles: Size 2.5 mm and 3.5 mm

Knitting tension: 25 sts and 37 rows in stocking sts = 10x10 cm before felting. If you are knitting too tight change to a larger size needle. If you are knitting too loose change to smaller needle size.

Back piece. Cast on 137(143)149(155)161 sts on needle size 2.5 mm. Work 1st row K1, R1 for Rib edge. Continue in Rib, but do not work through every 8th st. Work 5 rows. Change to needle size 3.5 mm and continue to work in Stocking sts for 30(34)38 (42)46 rows in stripe pattern according to the diagram. The base is the effect yarn and the stripes are the solid colour yarn. Then continue with the dot pattern as follows: Work 4 rows of stripes in between the dots. Make 3 repeats of dots in total. There are now completed 74(78) 82(86)90 rows on needles size 3.5 mm. Continue with the stripe pattern until a total of 110 (114)118(122) 126 rows are completed. Now cast off for armholes each side on every other row for : 6,3,3,2,2,1, 1 sts a total of 20 sts. The remaining number of sts comes to following 97(103)109(115)121 sts. Continue to work in stocking sts and needle size 3.5 mm until a total of 118 (122)126 (130)134 rows are completed and then begin the top Dot pattern according to diagram. Work 2 stripes in between the dot pattern and make 3 repeats in total. After completed the last row of Dots work 10 rows in stocking sts. Then cast off each side for the shoulders and at the same time in the middle for the neck opening as follows: Work 29(32)34(37)40 sts, cast off the middle 29(29)31 (31)31 sts and work the last 29(32)34(37)40 sts. Continue with 2 balls of yarn and cast off for the shoulder for 6,7,8,8 (8,8,8,8)8,8,9,9 (9,9,9, 10)10,10,10,10 sts and for the neck side 2,2,1 sts. Repeat for the other side.

Front piece: Cast on 71(74)77(80)83 sts on needle size 2.5 mm. For the zipper in the middle work the 4 last sts in stocking st throughout. Work 1st row K1, P1 for Rib edge and continue in Rib, but do not work through every 8th sts. Work 5 rows. Change to needle size 3.5 mm and work in stocking sts for 30(34)38(42)46 rows in stripe pattern according to diagram. The base is the effect yarn and the stripes are the solid colour yarn. Then continue with the dot pattern as follows: Work 4 rows of stripes in between the dots. Make 3 repeats of dots in total. There are now completed 74(78)82(86)90 rows on needles size 3.5 mm. Continue with the stripe pattern until a total of 110(114) 118(122) 126 rows are completed. Now cast off for armholes each side on every other row for: 6,3,3,2,2,1,1 sts a total of 20 sts. The remaining number of sts comes to following 51(54)57 (60)63 sts. After completed the last row of Dots work 5 rows in stocking sts. Then begin to cast off for the neck opening as

follows. Work 29(32)34(37)40 sts and cast off the remaining 17(17)18(18)18 sts. Then cast off from the shoulder side 6,7,8,8 (8,8,8,8)8,8,9,9(9,9,9,10) 10,10,10,10 sts and at the same time 2,2,1 sts for the neck opening.

Make **another front piece** but reverse.

Sleeve. Cast on 57(59)61(63)65 sts on needle size 2.5 mm. Work 1st row K1, P1 for Rib edge and continue in Rib, but do not work through every 8th sts. Work 5 rows. Change to needle size 3.5 mm and work in stocking sts for 2 rows in stripe pattern according to diagram. The base is the effect yarn and the stripes are the solid colour yarn. Then begin to inc. each side of the work until you have 77(91) 105(119)135 sts. Then inc. on the row 1 and 2 – row 5 and 6 – row 9 and 10 and so on until you have increased to 111 (117)123(129)135sts in total except for size XL where you continue to inc. on row 1 and 2, row 5 and 6 and row 9, 10 and so on. Now continue to work straight up without any-more inc. After 30 rows continue to make the dot pattern according to the diagram. Work 4 rows in between each repeat. Work 3 repeats of dots in total. When completed 147 rows cast off for the sleeve cap at the beginning of each row for: 6,3,3,2,2,1,1 a total of 28 sts and then cast off the remaining 75(81)87(93)99 sts. Joint the shoulders and pick up sts with needles size 2.5mm around the neckline. Work 1st row K1, P1 for Rib edge and continue in Rib, but do not work through every 8th sts. Work 5 rows. Cast off all sts.

Put the pieces together RS towards RS and sew them loosely together along the edges. Wash the pieces at 40 deg. Let them dry and then undo the sts. Iron the pieces from the left side. Then measure the zipper edge at front piece and make a zipper band the same length as follows: Cast on 6 sts on needle size 3.5 mm and work in stocking sts until the piece has the same length as zipper edge on front piece. Set in the sleeves. Sew the side and sleeve seams. Set in the zipper as follows. Join the extra zipper band to the front piece and then set in the zipper.

Design no. 2 Large shawl in triangel pattern

Materials: Kauni effekt – lace yarn 8/1

Yarn needed: 170g

Colour recommendations: All Kauni effekt-laceyarns 8/1

Needles: Circular needles size 4mm(to work back and forth on)

Finish measures: 262 x 112 cm

Help you will need as working along: This project is recommended for experience knitters. Follow the diagram and the recommendations carefully and don't give up. Read the diagram from the right hand side towards the left hand side and you would see the sts in the finish shawl. The middle st is permanent and each side is mirror imaged. The diagram consist of 3 pattern parts and referals as you get along. Follow the diagram and make sure the number of sts are correct at all times. The diagram shows the RS of the shawl. P always all sts from the WS and do not dec. or inc. from the WS. Make sure to work the 3 edge sts each side loosely so the edge do not become to tight. Begin the shawl in the middle of the top and then according to diagram 1. Cast on 9 sts and work according to the first part of the diagram from row 1 to row 31. During the first part of the pattern do not count the sts mark light/dark

squares only work the sts as they stand. 1 ½ pattern is now completed in the height. Continue according to the referals with row 13- 31. make sure that the dark coloured squares are not repeated (they are there for give an extra width in the shawl). Do not work according to diagram but work the light squares as repeats of rows, work on all sts until you reach the middle st. On the other side of the middle st are the same repeats of rows but mirror imaged. When you have worked 7 ½ pattern heights finish with row 29 and this part of the shawl are now completed. You have 188 sts each side of the middle st = a total of 377 sts. You can begin on the [diagrams 2nd part](#). K 1 row, P 1 row. The pattern should be understood as follows: After 3 edge sts work diagram as follows: * make a yo- slip 1 st K1 pssso* repeat this 47 times. Finish with 3 edge st. You can now begin on the [diagrams 3rd part](#). The sts on the needle should be divisible with 14 + 1 middle st. Each tognue is 14 sts wide. If the number of sts does not fit then you dec. or inc. on the first K row in the 3rd diagram parts. The middle st is the first st for the middle tongue. The diagram shows a half edge tongue (shown 1-10). Then 2 middle tongues (shown 2 x 1 – 14). Then 1 middle tongue (shown 1-4 arrow after the number 4 is the middle of the shawl). Now begin with the half edge tongue 1-10 then normal tongues 1-14 a total of 19 pcs. until you reach the middle tongue. Continue with 1-4 together with the middlle st. Then work mirror imaged as follows: Work the sts with the middle tongue 4,3,2,1 and continue with normal tongues 14, 13, 12, 11 and so on. Until the 19 tongues are all mirror imaged. The edge tongue at the other side should also be mirror imaged 10, 9, 8, 7, 6 and so on. Now you have completed 1st row of diagram part 3. Work the other rows the same way – RS of the shawl as diagram, LS as mirror imaged diagram. Please note in the diagram there are some part which are not filled out. Just ,jump over these parts. They are there to show the pattern corrently. On the last row of the diagram finish with two threads to strengthen the edge as follows: K2 tog. K1 st from prevoious st, K2 tog. K1 from previous st and so on. Wash the shawl with wool shampoo or wool soap. Block is to following measures: 262 x 112 cm on a towel on the mattress with pins according to drawing. Begin at the bottom“top” no. 1 and then“top” no.2 and no.3 and so on.

Design no. 3 Shawl with roses

Materials: Kauni efektyarn 8/2 (100% wool)

Size: One size

Finish measures : 215 x 105 cm

Yarn needed : 490 g

Colour recommendation: All colours of Kauni effekt yarn 8/2

Needles : Size 2 and 2.5 mm

Knitting tension: 25sts and 36rows in stocking sts =10x10cm before felting 30sts and 36rows in stocking sts =10x10cm after felting If you are knitting too tight change to a larger size needle. If you are knitting too loose change to smaller needle size. All pieces are made larger than normal because the pieces will be felted before assembled.

Squares with roses. Cast on 224 sts on needle size 2.5 mm and work 2 rows of Stocking sts. Continue to make roses according to the diagram. The width of the piece are 9 roses.

Make 8 repeats of roses. Then work 2 rows of stocking sts and cast off all sts.

Triangles in stocking sts. For making 2 identical triangles make 1 square piece. Cast on 210 sts on needle size 2mm. Work in stocking sts for 85 cm. Cast off.

Preparing for felting. Fold the pieces RS towards RS and sew them loosely together at the edge. Wash the pieces at 40 deg. in the washing machine and let them dry. Undo the sts and iron from the WS.

Assembly. Cut the square diagonal in to 2 equal triangles. Sew the 2 triangles and the squares with roses to a big shawl according to *drawing*. Make the tassels according to *drawing* and assemble them on the shawl. *See drawing*.

Design no. 4 Cardigan for children with rose pattern.

Materials: Kauni effekt 100% wool 8/2

Size: 92cm – 2 years : 102 – 4 years
116 – 6 years 128 – 8 years

Yarn needed:170g for base and 170g for pattern and edge

Colour recommendations:Base LL4;Roses JJ7;Edge RR7

Needles: Size 2mm and 2.5 mm

Knitting tension:25sts and 37rows in stocking sts = 10x10 cm. If you are knitting too tight change to a larger size needle. If you are knitting too loose change to smaller size needle.

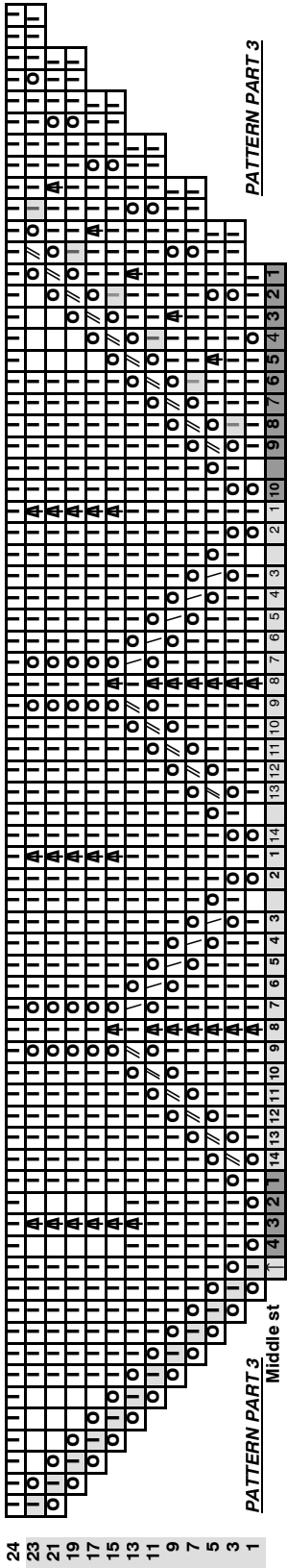
Back piece. Cast on 96(102)112(118) sts on needle size 2 mm. P first row from the WS with base colour. Then begin the pattern from the RS according to diagram no. 1. Work 57(69)81(99) rows. Then cast off for the armholes 2 sts each side from the RS on every other row a total of 12 (12)14(14) sts each side = 72(78)84(90) sts remaining. Then work 27(31)35(37) rows. Begin to cast off for the neck opening from the RS as follows: K 31(34)36(38) sts, cast off the middle 10(10)12(14) sts for the neck opening. You should now have 31(34)36(38) sts on each needle. Finish the left side first. Cast off for the neck opening on every other row for 3, 2, 1 sts = 6 sts in total. You now have 25(28)30(32) sts on the left hand needle. Cast off for the shoulder on every other row for: 8,8,9(9,9,10),10,10, 10(10,11,11) sts. Repeat for the right side (neck opening and shoulder) but mirror imaged.

Bottom edge pattern for the back piece. Pick up 96(102)112 (118) sts from the first row on needle size 2 mm. P the first row from the WS and cast on 1st = 97(103) 113(119)sts. Work according to diagram no.2. This makes a wave edge band with lace pattern.

Left front piece. Cast on 48(51)56(59) sts on needle size 2 mm. P the first row from the WS with base colour. Then begin the pattern from the RS according to diagram no. 1. Work 58(70)82(100) rows and then cast off 2 sts on every other row for the armhole a total of 12(12)14(14)sts.=36 (39)42(45) sts remaining. Now work 25 rows. Then begin to cast off for the neck opening from the RS as follows: Cast off at the neck side on every other row for: 3,3,2,1,1 (3,3,2,1,1,1)4,3,2,1,1,1(5,3,2,1 ,1,1) sts = a total of 11(11) 12(13)sts. = 132 rows in total. Then work 6 rows and cast off for the shoulder 8,8,9(9,9,10)10,10,10 (10,11,11) sts.

Right front piece. Make as left front piece but mirror imaged.

Bottom edge pattern for the front piece. Pick up 48(51)56



PATTERN PART 3

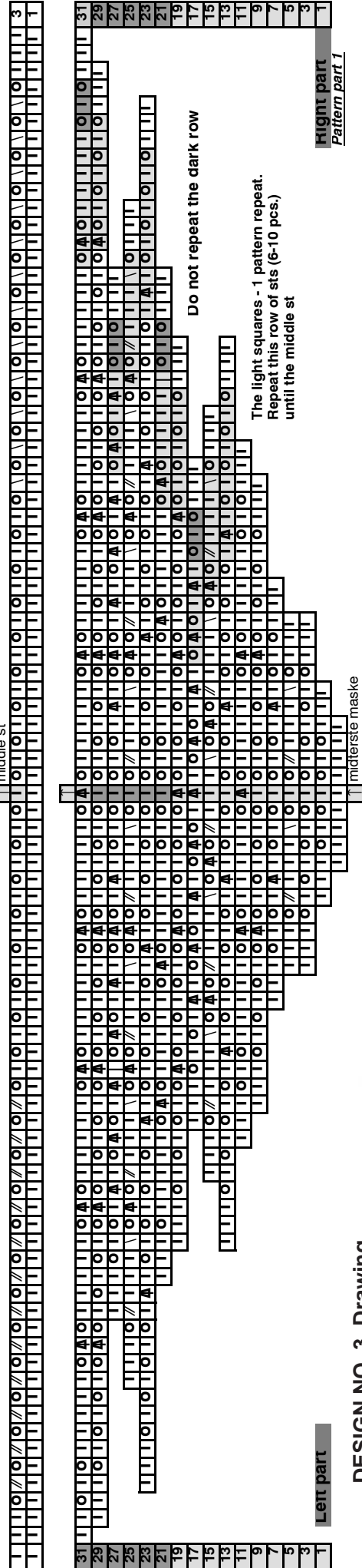
Middle st 1 4 3 2 1 14 13 12 11 10 9 8 7 6 5 4 3 2 1 10 9 8 7 6 5 4 3 2 1 10 9 8 7 6 5 4 3 2 1

row 3 pattern part 2

Model no. 2

PATTERN PART 2

The tongues begins with a K row which is seen as the last row in pattern part 2. Count all sts on the left and the right hand side of the middle st = 278 sts each side plus the middle st = 2 x 278 + 1 = 557 sts in total.



Left part

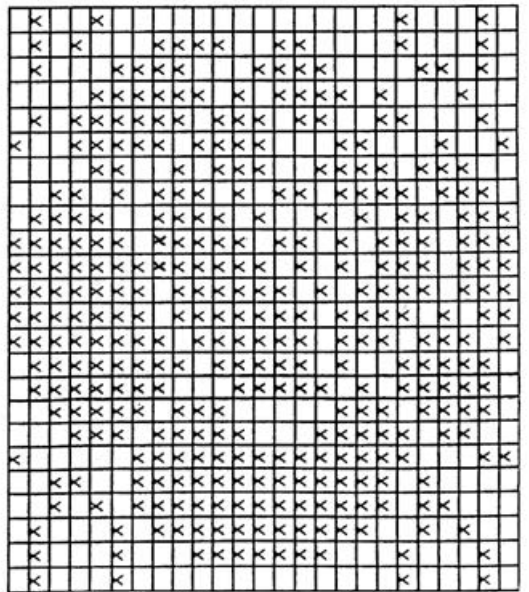
Right part

Do not repeat the dark row

The light squares - 1 pattern repeat.
Repeat this row of sts (6-10 pcs.)
until the middle st

midterste maske

DESIGN NO. 3 Drawing

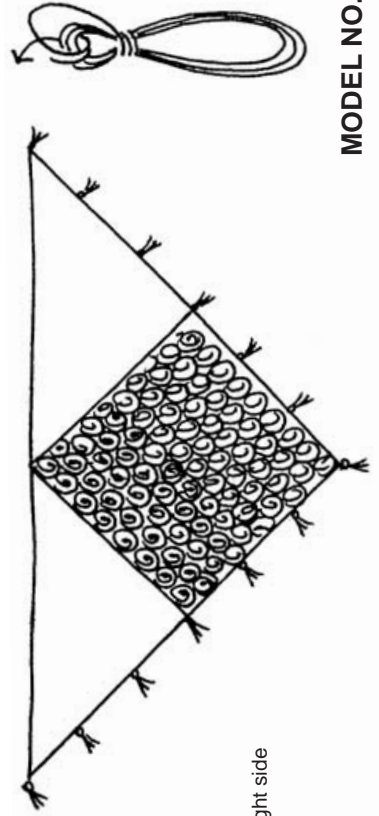


ABBREVIATIONS

- K3 tog
- K st
- Make a yo
- K2 tog
- Slip 1 st as if to K, K1 pss0
- Light squares - 1 pattern repeat
- Dark Squares - 1/2 pattern repeat
- Middle st, splits the shawl into 1 left and 1 right side



MODEL NO. 3



MODEL NO. 3