

Knitted garments no 11

Garment no 1 FLOWERY SHAWL WITH EDGE AND TASSELS

Yarn: Kauni Effekt Yarn no 8/2 (100% wool) and Kauni Single Colour 100% wool 8/2.

Size. One size.

Finished measurements: 180 cm x 90 cm.

Required yarn: 300 g Effekt Yarn and 120 g Single Colour Yarn.

Suggested colours schemes: EX/FF5 ; EG/HH1 ; EA/FF5

See all suggestion in the colour version of **Kauni Catalogue Winter 2012-2013**.

Knitting Needles: 60 cm circular needle 3 mm (or 30cm long needles 3 mm if worked back and forth rather than in the round).

Tension: 26 sts and 36 rows st st = 10 x 10 cm before felting, 30 sts and 36 rows st st = 10 x 10 cm after felting. If the tension is not correct try to change needle size to larger or smaller needles. All pieces are worked larger than normally as they will be felted before finishing.

Square with roses – can be worked in the round on circular needle or back forth on long needles:

In the round on circular needle 3 mm: Cast on and join 182 sts and work 4 rounds st st in single colour. Then work all rounds of the diagram. At the start and finish of each round knit 1 st in single colour, these will later be cut when finishing the shawl. Work 2 rounds st st in Single Colour and cast off all sts at the same time.

Back and forth on long needles 3 mm:

Cast on 180 st and work 4 rows st st in Single Colour. Work the diagram across all sts. Work 2 rows st st in Single Colour (the square should be a perfect square now) and cast off all sts at the same time.

Triangles in st st. To work 2 identical triangles work one square and cut it on the diagonal later. See photo. Cast on 180 sts on long needles 3 mm in Kauni Effekt Yarn. Work stst back and forth until work is a perfect square. Cast off all sts in knitting at the same time.

Preparations for felting. Fold the square for triangles RS on RS and baste along the edge. Baste the patterned work tog along the open sides RS on RS. Wash at 40°C. Dry and unpick the basting. Press from the WS.

Finishing. Cut the patterned work along the solid stripe (if worked in the round) (the first and last solid coloured sts of the round). Sew zig-zag sts across the cut edge if needed and fold it neatly back. Cut the square work in the diagonal for 2 identical triangles. Sew zig/zag sts across the cut edges if needed. Sew the two triangles and the square tog according to diagram.

Edge. Cast on 2 sts on needles 3 mm. Work 2 rows st st, inc 1 st in both sides at the start of the row every other row until a total of 6 sts. Work approx 178 cm st st. Cast off 1 st in both sides of work on every other row until 2 sts remain. (The edge must be as long as the longest edge of the shawl.) Sew the edge on the shawl.

Make tassels and add to the shawl. See diagram.

Garment no 2 FLOWERY SHAWL WITH EDGE

Everything is worked and felted in same manner as no 1. Only the edges and the finishing are different.

Edges:

Top edge (=the longest length): Cast on 2 sts on needles 3 mm. Work 2 rows st st, inc 1 st in both sides at the start of the row every other row until a total of 6 sts. Work approx 178 cm st st. Cast off 1 st at the beginning of both sides every other row until 2 sts remain. Cast off. (The edge must be as long as the longest edge of the shawl.)

The shorter edges: Cast on 2 sts on needles 3 mm. Work 2 rows st st, inc 1 st in both sides at the start of the row every other row until a total of 6 sts. Work approx 128 cm st st. Cast off 1 st at the beginning of both sides every other row until 2 sts remain. (The edge must be as long as the longest edge of the shawl.) Make another edge in same manner. Sew the edges onto the shawl.

Garment no 3 FLOWERY SHAWL WITH TASSELS

Everything is worked and felted in same way as no1. The edge is NOT worked and the finishing is different.

Finishing. Following felting cut the square work in the diagonal for 2 identical triangles. Sew zig/zag sts across the cut edges if needed. Sew the two triangles and the square tog according to diagram. Fold the

cut edge (the long, top edge of the shawl to the WS and sew.) Make tassels and sew onto the shawl. See diagram.

Garment no 4 HAT WITH ROSES

Yarn: Kauni Single Colour 100% wool 8/2.

Str. S(L).

Required yarn: approx 80 g.

Suggested colours: *See table next to diagram.*

Knitting needles: edge: 40 cm circular needle 2mm. Hat: 40 cm circular needle 2.5 mm.

Tension: 29 sts and 32 rows st st = 10 x 10 cm before felting, 27 sts and 31 rows st st = 10 x 10 cm after felting. If the tension is not correct try to change needle size to larger or smaller needles. All pieces are worked larger than normally as they will be felted before finishing.

Hat. Cast on and join 144(168) sts on circular needle 2 mm in base colour and work 12 rounds st st for rolling edge. Continue on circular needle 2.5 mm and work according to *diagram*. Work 26 rounds st st in base colour unless there is a pattern to follow in chosen diagram. Pull yarn through sts (do not cast off) to finish neatly later.

Finishing. Fold work RS to RS and baste along the side edge. Felt at 40°C. Dry and unravel the basting. Press from the WS. Sew pintucks on both sides of the roses using suitable thread according to *diagram (dark background) and photo*. Pull the sts at the top of the hat tog and sew tog, see diagram. Fasten yarn.

Garment no 5 HAT WITH FLOWERS

Worked in same manner as no 4 but the according to diagram 5.

See table next to diagram.

Garment no 6 LEGGINGS

Yarn: Kauni Yarn 8/2 approx 420 g.

Sizes: S(M)L(XL) **Finished measurements:**

Hips: 78(86)94(102)cm.

Length AB/BC (see drawing) : 81/23 (80/24) 79/25 (78/26)cm

Legs' width at heel - A : 23(24)25(26)

Legs' width at top - B: 50(54)58(62)

Suggested colours : *See table next to diagram.*

Required yarn: base colour : 300 g, other colours : 130 g.

Knitting needles: circular needle 2.5 mm and/or long needles 2.5 mm.

Tension: med p nr.2.5 mm: 29 sts and 32 rows st st = 10 x 10 cm. If the tension is not correct try to change needle size to larger or smaller needles

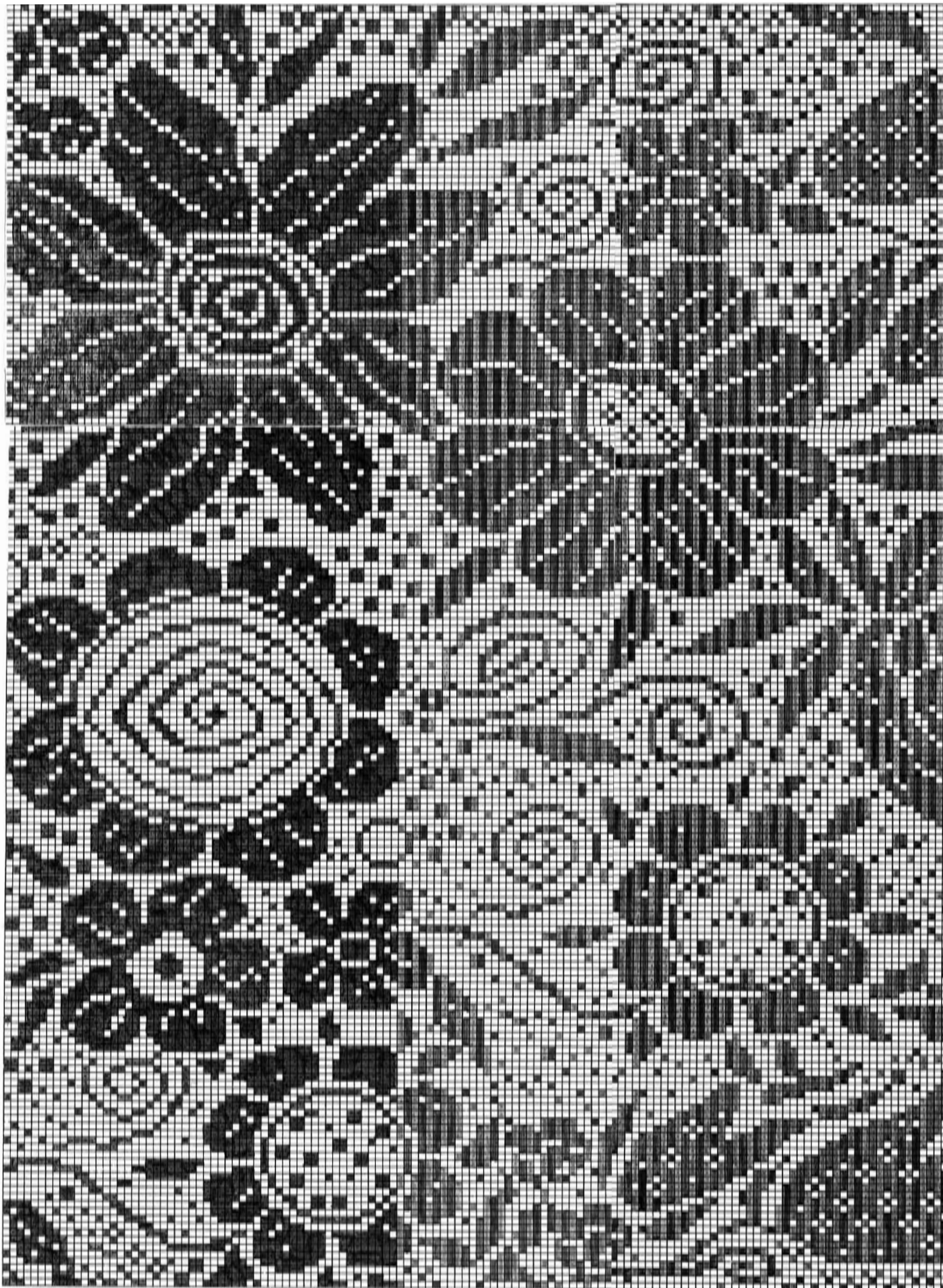
The legs can be worked either in the round – see instructions – or back and forth on long needles, see photo, Buksebenene kan strikkes med circular needle. If working back and forth inc the same amount of times as if worked in the round.

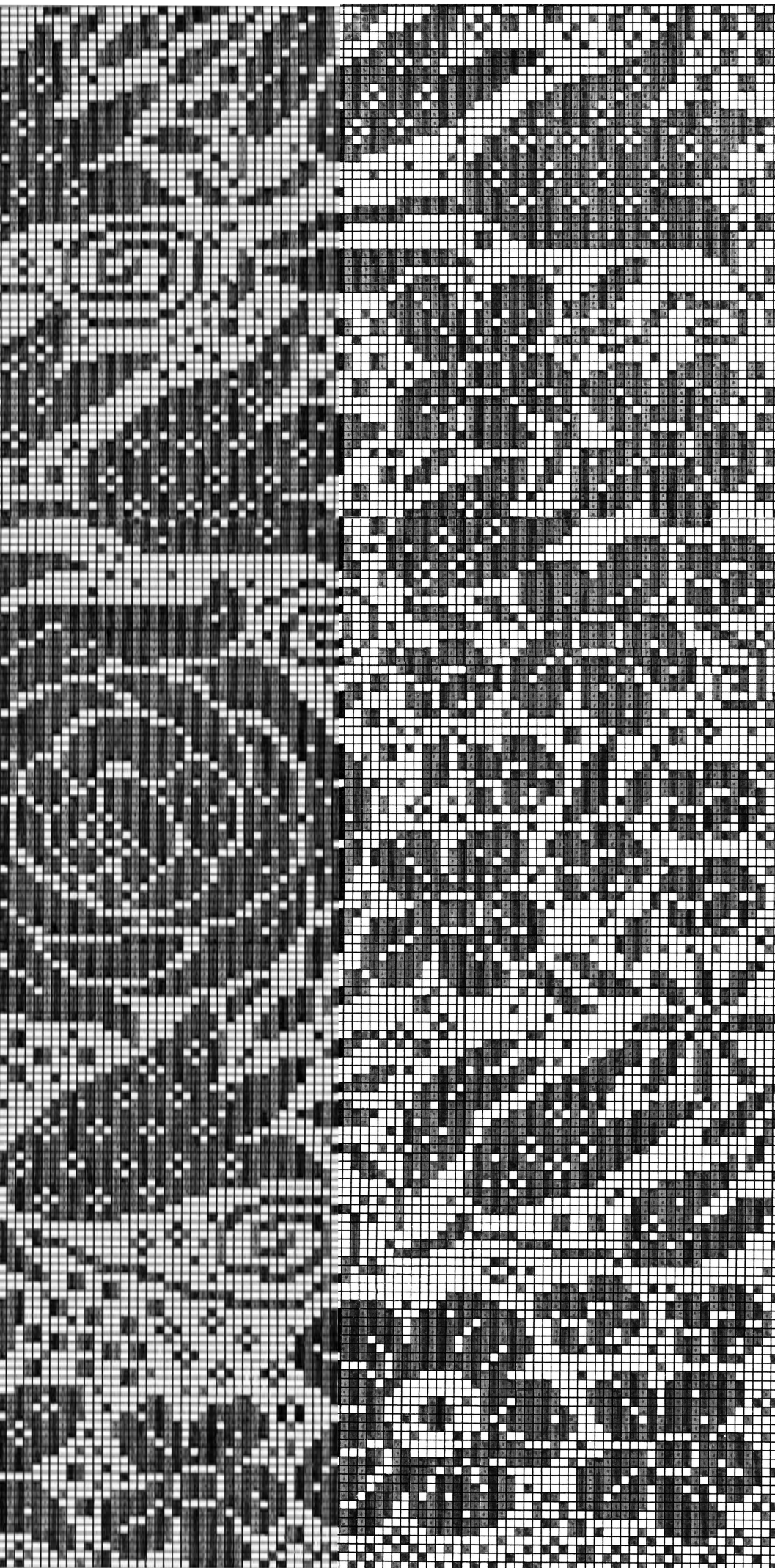
Left leg. Cast on and join 70(72)74(78)sts on circular needle 2.5 mm and work 5 rounds st st in base colour; purl the 1st round. On the 7th round (WS if working back and forth) work a row of holes (folding edge): edge st, *k2tog, yarn round needle*, repeat * - * for the rest of the round, k1 edge st

8th round (RS): purl. Work 6 round st st. Next work pattern according to diagram. Inc 1 st every 7th(6th)6th(5th) round in both sides until a total of 98(100)102(158)sts. Then inc 1 st every 7th(6th)5th(4th)round in both sides at the start and end of every round. Remember to work pattern (!) until a total of 144(156)168(180)sts. Continue until work (AB) measures 81(80)79(78)cm. Then work base colour back and forth on needles 2.5 mm: Cast off 3,2,2,1,1,1,1 (4,3,2,2,1,1,1)5,4,2,2,1,1,1(6,5,3,2,2,1,1) sts at the beginning of every purled row (centre front), and at the same time cast off 7,2,2,1,1,1,1(8,3,2,2,1,1,1)9,4,3,2,1,1,1(10,5,3,2,2,1,1,1)sts at the beginning of every knitted row (centre back). Strik 28(29)30(31) rows and cast off.

Right leg: worked in same manner only mirrored.

Finishing. Sew pintucks using suitable thread according to *diagram (dark background) and photo*. Baste tog along the single coloured parts center front and back. Fold the edge at the row of holes and sew using invisible sts. Wash at 40°C. Dry and unpick the basting. Press from WS. Sew tog. Fold and make a channel for elastic waistband, sew and pull band through.





Garment no. 7 PONCHO WITH FLOWERS

Yarn: Kauni Effekt Yarn no 8/2 (100% wool) and Kauni Single Colour 100% wool 8/2

Sizes. S(M)L(XL)

Required yarn: 630 g Effekt Yarn, 240 g Single Colour Yarnb.

Fleece (soft fabric for collar) : 10 x 45 cm (choose a colour that goes with the colour scheme.)

Suggested colours:EFL/FF5;EU/MM;EC/AA See all suggestions in „Knitted garments nr.11 in colour“ in **Kauni Catalouge Winter 2012-2013**

Pinde: circular needle 3 mm or long needles 3mm ; needle 2 mm. (Work in the round using a circular needle or work back and forth using long needles, same amount of rows/rounds.)

Tension: 26 sts and 36 rows st st = 10 x 10 cm before felting, 30 sts and 36 rows st st = 10 x 10 cm after felting. If the tension is not correct try to change needle size to larger or smaller needles. All parts are worked larger than needed as they will be felted before finishing.

Back – can be worked in the round on a circular needle or back and forth on long needles:

In the round on circular needle 3 mm:

Cast on 182 sts on circular needle and work 4 rounds st st in solid colour yarn. Work in the round *according to diagram*, a total of 202 rounds. At the beginning and end of each round work 1 st st in solid colour. These sts will later be cut. On the last round cast off the two solid coloured cutting sts and work back and forth on circular needle:

Work back and forth and on every other row cast off 2,1,2,1 etc sts at the begining of the row until 220 rows. Work 2 rows in single colour and cast off.

Long needles 3mm, back and forth:

Cast on 180 sts and work 4 rows st st back and forth in solid colour. Next work back and forth *according to diagram*, a total of 202 rows, pattern across all sts.

On every other row cast off 4 sts a total of 4 times at the beginning of the row. Then cast off 2 sts every other row a total of 6 times; 220 rows are completed.

Cast off 2 sts every 4th row a total of 4 times. Change to solid colour, work 2 rows and cast off.

Front.

In the round on circular needle 3 mm:

Cast on 182 sts on circular needle and work 4 rounds st st in solid colour. Next work *pattern according to diagram* in the round a total of 184 rounds. Work 1 st st in solid colour at the beginning and end of every round, these sts will be cut later. On the last round cast off the two solid coloured cutting sts and work back and forth on circular needle:

Cast off for neckline 4 sts at the beginning of every other row a total of 4 times. Next cast off 2 sts on every other row a total of 6 times. 204 rows pattern have been completed. Cast off 2 sts every 4th row a

total of 4 times. Work 2 rows st st in solid colour and cast off the remaining sts at the same time.

On long needles 3 mm back and forth:

Cast on 180 sts and work 4 rows st st in solid colour. Work back and forth *according to diagram* a total of 184 rows.

Cast off for neckline 4 sts on every other row a total of 4 gange. Then cast off 2 sts every other row a total of 6 times. 204 rows of pattern are complete now. Cast off 2 sts every 4th row a total of 4 times. Work 2 rows in solid colour and cast off.

Right sleeve.

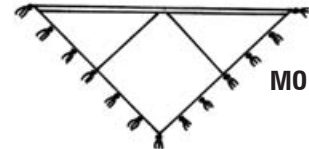
Cast on 49 sts in Effekt Yarn on long needles 3 mm and work 8(11)14(17) rows st st except on rows 9 and 17 : inc 1 st at both sides of work. Rows 17-119: inc (1,1,1,2,1,1,1, 2 etc) sts in both sides of work. Rows 123-237: dec (1,1,1,2,1,1,1,2 etc) sts in both sides of work. 49 sts remain. Cast off for neckline; cast off (24,16,10) sts in the beginning of each row.

Left sleeve is worked in same manner, only mirrored.

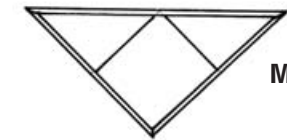
Cuffs. Cast on 63 sts on needles 2 mm and work 8 rows st st in solid colour. Work 6 rows stripes :1 st solid colour and 1 st Effekt. Continue in solid colour and work every st tog with the loops from the cast on edge. Work 3 rows st st in solid colour. Cast off all sts at the same time.

Collar. Cast on 131 sts on needle 2 mm in a different colour yarn (the thread will be pulled out later to open up sts for finishing). Work 2 rows in solid colour (later 1 row will be pulled out and 1 row solid colour will remain for sewing onto the poncho.). Work 18 rows stripes: 1 st solid colour and 1 st Effekt. Cast off all sts at the same time.

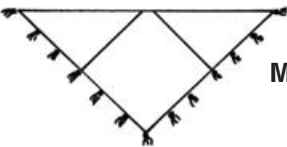
Finishing. Place all pieces tog in pairs RS to RS, fold the collar and cuffs tog and baste everything along the edges. Wash at 40°C. Dry and unpick the threads. Press from the WS. Sew cuffs onto sleeves. Sew sleeves onto the front and back. Sew fleece on the copllar and sew the collar on the poncho. Make the tassels and sew on the poncho.



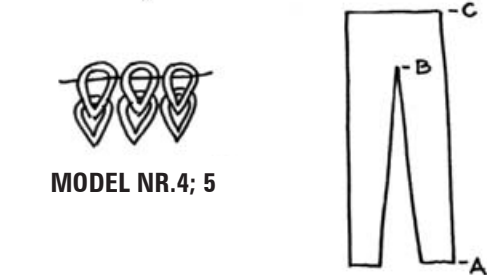
MODEL NR.1



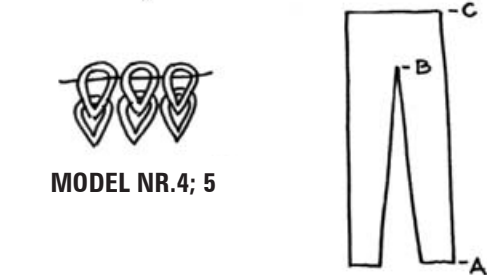
MODEL NR.2



MODEL NR.3



MODEL NR.4; 5



MODEL NR.6

Model nr.5 og Model nr. 4

nr.5 nr.5-1 nr.5-2 nr.5-3

JJ7
HH3
JJ7

HH5

AA MM1 JJ7 JJ2

HH1 NN2 AA GG

NN2 HH5 NN2 GG

AA nr.5 nr.4 MM1 nr.5-1 nr.4-1 BB1 nr.5-2 nr.4-2 GG nr.5-3 nr.4-3

HH3

JJ7

NN5 DD3 NN2 HH3

HH5 PP1 HH3 NN2

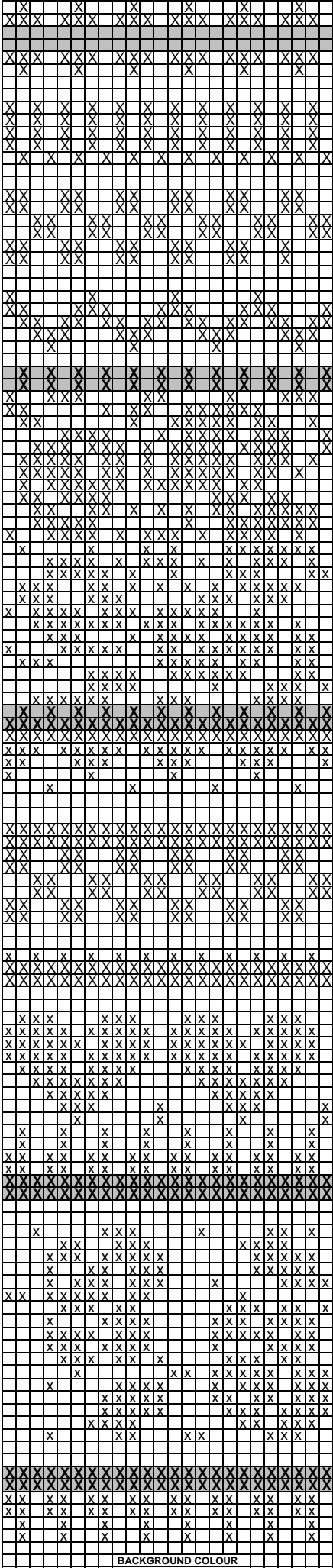
HH1 GG SS JJ7

NN5 SS2 NN3 HH1

HH1 GG SS JJ7
CC DD2 BB1 BB1
nr.4 nr.4-1 nr.4-2 nr.4-3

Model

DIAGRAM



BACKGROUND COLOUR

Model nr. 6

nr.6 nr.6-1 nr.6-2 nr.6-3

SS4 NN4 NN3 LL1
YY1 NN5 SS1 LL3

RR10 NN4 NN3

YY1 NN5 NN2 RR10

RR10 MM1 HH1 LL1

GG

JJ7 NN2 NN3 LL6 background

GG HH5 HH3 GG flower QQ/background

RR10 MM1 HH1 GG

CC CC BB1 LL6

YY1 NN4 NN2 RR10

SS4 NN5 NN3 LL3/GG

YY1 LL6

CC NN4 NN2 GG

GG HH5 HH3 GG heart LL1background

LL1 CC BB1 QQ

CC HH3 SS1 GG

CC NN2 NN3 LL4 rose RR10 background GG
JJ7 CC BB1

CC

LL1 HH3 SS1 RR10 GG LL6

CC CC BB1 LL6

nr.6 nr.6-1 nr.6-2 nr.6-3

Model